



Government of India  
Ministry of Earth Sciences  
India Meteorological Department



Press Release  
Date: 10<sup>th</sup> July, 2025  
Time of Issue: 1330 hours IST

**Subject: Heavy to very heavy rainfall activity likely to continue over northwest India during next 2-3 days and over central India during next 4-5 days.**

**Realised weather during past 24 hours till 0830 hours IST of today, the 10<sup>th</sup> July, 2025:**

- ❖ **Heavy to very heavy rainfall (7-20 cm)** has been recorded at isolated places over Jammu & Kashmir, Himachal Pradesh, Uttarakhand, Punjab, Haryana, West Uttar Pradesh, East Rajasthan, Chhattisgarh; **Heavy rainfall (7-11 cm)** at isolated places over West Rajasthan, Madhya Pradesh, Vidarbha, Madhya Maharashtra, West Bengal, Coastal & South Interior Karnataka, Odisha, Jharkhand, Assam & Meghalaya and Tripura.
- ❖ **Thunderstorm accompanied with Squally/Gusty winds with speed 40-60 kmph** over Tamil Nadu, Kerala, Karnataka, Coastal Andhra Pradesh & Yanam, Telangana, Rayalaseema, Punjab, Madhya Maharashtra, Bihar, Haryana, Madhya Pradesh, Vidarbha, Marathwada, Assam & Meghalaya

For more details of realised weather, kindly refer [Annexure I](#),

**i. Weather Systems, Forecast and Warnings (refer to Annexure II & III):**

- ❖ The Low-Pressure area lay over south Jharkhand & neighbourhood.
- ❖ The **Monsoon trough** runs to near its normal position at mean sea level.
- ❖ An **upper air cyclonic circulation** lies over Punjab & neighbourhood in lower & middle tropospheric levels.
- ❖ A **trough** runs from southwest Uttar Pradesh to the cyclonic circulation associated with Low Pressure area over south Jharkhand & neighbourhood in lower tropospheric levels.
- ❖ A **trough** runs from northeast Arabian Sea to the cyclonic circulation associated with Low Pressure area over south Jharkhand & neighbourhood in middle tropospheric levels.
- ❖ An **upper air cyclonic circulation** lies over northeast Assam in lower tropospheric levels.

Under the influence of these systems, the following weather is likely:

**Northwest India:**

- ✓ Isolated **heavy rainfall** likely over East Rajasthan, Uttarakhand, Himachal Pradesh, Uttarakhand during 10<sup>th</sup>-16<sup>th</sup>; Punjab, Haryana Chandigarh on 10<sup>th</sup>, 11<sup>th</sup> & 16<sup>th</sup>; Jammu-Kashmir on 10<sup>th</sup> and during 14<sup>th</sup>-16<sup>th</sup>; West Uttar Pradesh during 10<sup>th</sup>-13<sup>th</sup>; East Uttar Pradesh during 10<sup>th</sup>-12<sup>th</sup>; West Rajasthan on 10<sup>th</sup> and during 12<sup>th</sup>-16<sup>th</sup> July with **very heavy rainfall** over Himachal Pradesh, Jammu, Punjab, Haryana, West Uttar Pradesh on 10<sup>th</sup>; Uttarakhand on 13<sup>th</sup>; West Rajasthan on 14<sup>th</sup>; East Rajasthan during 11<sup>th</sup>-14<sup>th</sup> July.
- ✓ Light/moderate rainfall at most/many places accompanied with thunderstorm, lightning likely over western Himalayan region and some/many places over the plains during next 7 days.

**East & Central India:**

- ✓ Isolated **heavy rainfall** very likely to continue over Madhya Pradesh during 10<sup>th</sup>-16<sup>th</sup>; Vidarbha during 10<sup>th</sup>-13<sup>th</sup>; Chhattisgarh, Jharkhand during 10<sup>th</sup>-14<sup>th</sup>; Sub-Himalayan West Bengal & Sikkim during 13<sup>th</sup>-16<sup>th</sup>; Gangetic West Bengal on 14<sup>th</sup>; Odisha on 10<sup>th</sup> and during 13<sup>th</sup>-15<sup>th</sup> July with **very heavy rainfall** over East Madhya Pradesh during 10<sup>th</sup>-12<sup>th</sup>; West Madhya Pradesh during 11<sup>th</sup>-14<sup>th</sup> July.

- ✓ Light/moderate rainfall at most/many places accompanied with thunderstorm, lightning & gusty winds speed reaching 30-40 kmph likely over the region during next 7 days.

#### **West India:**

- ✓ **Heavy rainfall** likely at isolated places over Konkan & Goa on 13<sup>th</sup> & 14<sup>th</sup>; Gujarat Region during 12<sup>th</sup>-16<sup>th</sup>; Ghat areas of Madhya Maharashtra on 10<sup>th</sup>, 13<sup>th</sup> & 14<sup>th</sup>; Saurashtra & Kutch on 13<sup>th</sup> July.
- ✓ Light/moderate rainfall at many/some places very likely over the region during next 7 days.

#### **Northeast India:**

- ✓ Light/moderate rainfall at most places accompanied with **thunderstorm, lightning** likely to continue over Northeast India during next 7 days.
- ✓ Isolated **heavy rainfall** very likely over Mizoram & Tripura on 10<sup>th</sup>; during 13<sup>th</sup>-16<sup>th</sup>; Arunachal Pradesh during 11<sup>th</sup>-16<sup>th</sup> and Assam & Meghalaya during 12<sup>th</sup>-16<sup>th</sup> July.

#### **South Peninsular India:**

- ✓ Isolated **heavy rainfall** likely over Coastal Karnataka on 10<sup>th</sup> and Kerala during 12<sup>th</sup>-16<sup>th</sup> July.
- ✓ **Strong surface winds** (speed reaching 40-50 kmph) very likely over South Peninsular India during next 3 days.
- ✓ Light/moderate rainfall at many/some places over Kerala & Mahe, Lakshadweep, Karnataka, Rayalaseema; isolated to scattered rainfall over Coastal Andhra Pradesh & Yanam, Telangana during next 7 days.

#### **Fishermen Warnings:**

**Fishermen are advised to avoid venturing into the following from 10<sup>th</sup> July to 15<sup>th</sup> July 2025 to the following Areas:**

- ✓ **Arabian Sea:**  
Along and off Konkan, Goa coasts and adjoining sea area for day 5 (14<sup>th</sup> July). Along and off the Somalia coast and adjoining sea areas, Oman and adjoining Yemen coast & adjoining sea areas; most parts of westcentral and adjoining eastcentral Arabian Sea, southern parts of northwest & northern parts of southwest Arabian Sea for day 1 to day 5 (10<sup>th</sup> to 15<sup>th</sup> July).
- ✓ **Bay of Bengal:**  
Along and off north Andhra Pradesh coast for day 1 & day 2 (10<sup>th</sup> & 11<sup>th</sup> July). Most parts of westcentral Bay of Bengal and adjoining areas of eastcentral and southwest & some parts of northwest Bay of Bengal for day 1 (10<sup>th</sup> July), many parts of westcentral Bay of Bengal and adjoining parts of southwest Bay of Bengal for day 2 (11<sup>th</sup> July), few parts of westcentral Bay of Bengal for day 3 & day 4 (12<sup>th</sup> & 13<sup>th</sup> July); some southern parts of south Bay of Bengal for day 2 to day 5 (11<sup>th</sup> to 15<sup>th</sup> July). Over Gulf of Mannar for day 1 to day 5 (10<sup>th</sup> & 15<sup>th</sup> July);

**Total suspension of fishing operations is suggested over above mentioned areas and dates.**

#### **ii. Weather conditions and forecast over Delhi/NCR during 10<sup>th</sup> to 13<sup>th</sup> July, 2025 (Annexure IV)**

**For more details, kindly refer National Weather Bulletin:**

[https://mausam.imd.gov.in/responsive/all\\_india\\_forecast\\_bulletin.php](https://mausam.imd.gov.in/responsive/all_india_forecast_bulletin.php)

**For District wise warnings refer:** <https://mausam.imd.gov.in/responsive/districtWiseWarningGIS.php>

**Rainfall recorded (in cm) during past 24 hours till 0830 hours IST of today, the 10<sup>th</sup> July:**

- ❖ **West Uttar Pradesh:** Madawara (dist Lalitpur) 17; Muzaffarnagar(t) (dist Muzaffarnagar) 15; Muzaffarnagar (dist Muzaffarnagar) 12; Agra (CWC) (dist Agra) 11; Sadabad (dist Hathras) 9; Agra (dist Agra), Budaun (dist Badaun), Dhampur (dist Bijnor) 8 Each; Mawana (dist Meerut), Nakur (dist Saharanpur) 7 Each;
- ❖ **Jammu-KashmirLadakh-Gilgit-Baltistan-Muzaffarabad:** Kathua (dist Kathua) 17; Kathua ARG (dist Kathua) 13; Kathua Kvk (dist Kathua) 11; Samba AWS (dist Samba) 10; Burmal ARG (dist Kathua) 8;
- ❖ **East Rajasthan:** Nasirabad (dist Ajmer) 16; Kotputli (dist Jaipur) 15; Behror (dist Alwar), Ajmer (dist Ajmer) 11 Each; Fatehpur (dist Sikar), Ajmer Tehsil SR (dist Ajmer) 9 Each; Kishngarhwas SR (dist Alwar), Masuda SR (dist Ajmer), Mandrayal SR (dist Karauli), Paowta (dist Jaipur) 8 Each; Kotkasim SR (dist Alwar) 7;
- ❖ **Jharkhand:** Ghatsila (dist East Singhbhum) 16; Jamshedpur (dist East Singhbhum) 9; Putki (dist Dhanbad), Dhanbad (dist Dhanbad), Ranchi AP (dist Ranchi), Chandankiary (dist Bokaro), Chandrapura (dist Bokaro), Anandpur (dist West Singhbhum), Tundi (dist Dhanbad) 8 Each; Messenjor (dist Dumka), Purvi Tundi (dist Dhanbad), Putki Dvc (dist Dhanbad), Nala (dist Jamtara) 7 Each;
- ❖ **Punjab:** Madhopur (dist Pathankot) 14; Ranjit Sagar Dam Site (dist Pathankot) 9; Fatehgarh Sahib AWS (dist Fatehgarh Sahib) 8; Phangota (dist Pathankot) 7;
- ❖ **Uttarakhand:** Mussoorie (dist Dehradun) 13; Kapkot (dist Bageshwar) 12; Haldwani (dist Nainital) 11; Mukteshwar (dist Nainital), Ranikhet (g) (dist Almora) 10 Each; Dunda (dist Uttarkashi) 9; Kashipur (dist Udham Singh Nagar), Khatima (dist Udham Singh Nagar), Dhanaulti (dist Garhwal Tehri), Nainital (dist Nainital), Jaspur (dist Udham Singh Nagar) 8 Each;
- ❖ **Haryana-Chandigarh-Delhi:** Taoru (dist Nuh), Gurgaon REV (dist Gurgaon) 13 Each; Dhansa (dist South West Delhi) 11; Najafgarh AWS (dist South West Delhi), Green Field Ps (dist North East Delhi), Gurgaon Kvk AWS (dist Gurgaon) 10 Each; Rewari (dist Rewari), Kanina (dist Mahendragarh), Manethi REV (dist Rewari) 9 Each; Pusa AWS (dist West Delhi), Palhawas REV (dist Rewari) 8 Each; Ayanagar AWS (dist South Delhi), Dharuheda REV (dist Rewari), Dadri Toye Edu Fmo (dist Jhajjar), Assandh (dist Karnal), Bawal (dist Rewari), Aya Nagar (dist South Delhi), Delhi Ridge (dist Central Delhi), Farukhnagar (dist Gurgaon) 7 Each;
- ❖ **Chhattisgarh:** Marri Bangla Deori (dist Balod) 12; Dondilohara (dist Balod), Akaltara (dist Janjgir), Arjunda (dist Balod) 8 Each; Gundardehi (dist Balod), Kumarda (dist Rajnandgaon), Bhothiya (dist Sakti) 7 Each;
- ❖ **Himachal Pradesh:** Bilaspur Sadar (dist Bilaspur) 12;
- ❖ **East Madhya Pradesh:** Malthone (dist Sagar) 11; Damoh-aws (dist Damoh) 10; Katangi (dist Balaghat), Kesli (dist Sagar) 9 Each; Shahgarh (dist Sagar), Kusmi (dist Sidhi), Tirodi (dist Balaghat) 8 Each; Batiyagarh (dist Damoh), Patharia (dist Damoh), Baldevgarh (dist Tikamgarh) 7 Each;
- ❖ **Nagaland, Manipur, Mizoram & Tripura:** Sonamura (dist Sipahijala) 11; Sonamura ARG (dist Sipahijala) 10; Jirania ARG (dist West Tripura) 7;
- ❖ **Madhya Maharashtra:** Radhanagari (dist Kolhapur) 10;
- ❖ **Sub Himalayan West Bengal & Sikkim:** Lava (dist Kalimpong) 10; Munsong (dist Darjeeling) 9;
- ❖ **West Rajasthan:** Didwana (dist Nagaur) 9;
- ❖ **Assam & Meghalaya:** Mawsynram (dist East Khasi Hills) 9; Cherrapunji(rkm) (dist East Khasi Hills) 8; Cherrapunji (dist East Khasi Hills) 7;
- ❖ **West Madhya Pradesh:** Khirkiya-arg (dist Harda), Seoni Malwa (dist Narmadapuram) 9 Each; Shivpuri (dist Shivpuri), Kumbhraj (dist Guna) 8 Each; Harda (dist Harda), Roan (dist Bhind), Mihona (dist Bhind) 7 Each;
- ❖ **Vidarbha:** Pandherikawara (dist Yeotmal) 8; Ghatanji (dist Yeotmal), Ralegaon (dist Yeotmal) 7 Each;
- ❖ **South Interior Karnataka:** Sringeri HMS (dist Chikkamagaluru) 7;
- ❖ **Coastal Karnataka:** Castle Rock (dist Uttara Kannada), Kadra (dist Uttara Kannada) 7 Each;
- ❖ **Odisha:** Dunguripalli (dist Sonepur) 7;
- ❖ **Gangetic West Bengal:** Berhampore (dist Murshidabad) 7.

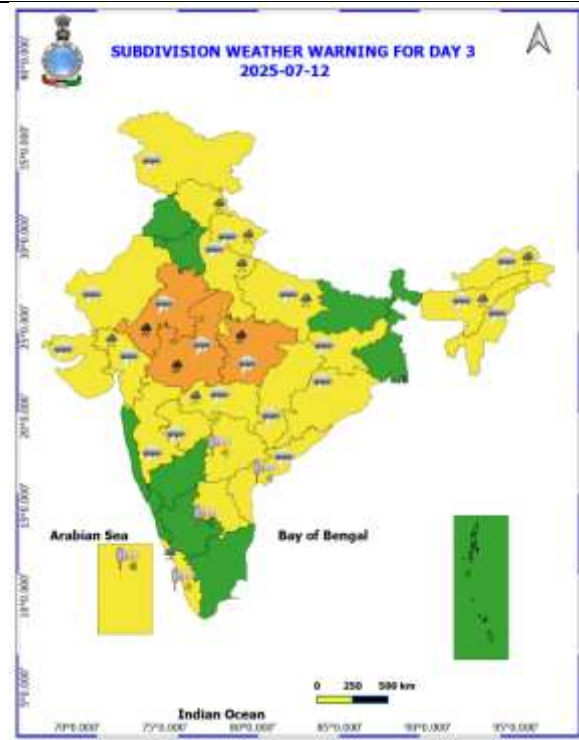
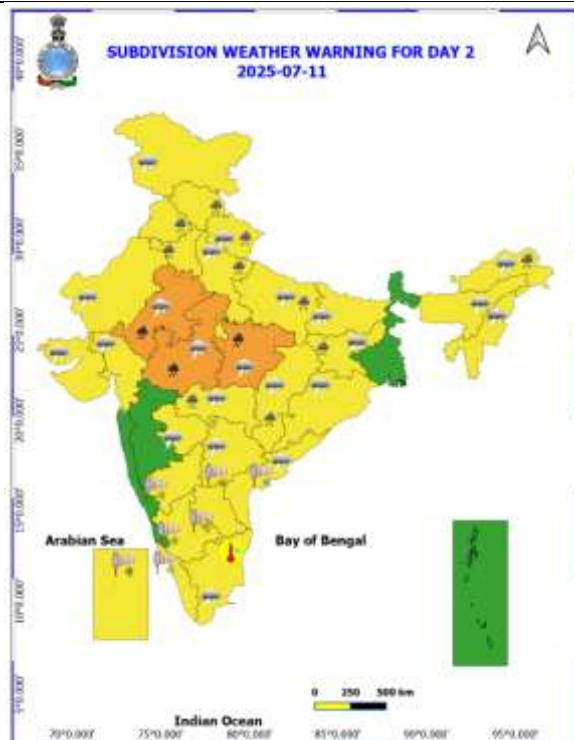
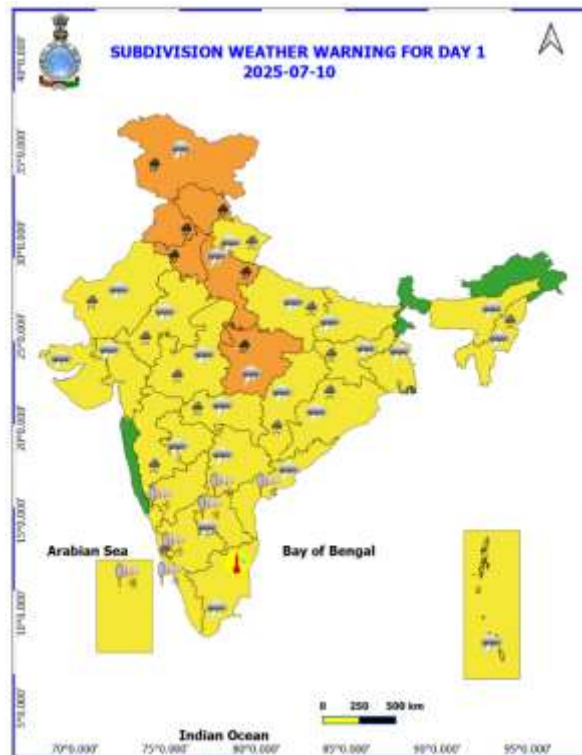
**Realised Gusty Winds (kmph) During Past 24hours ending at 0830 hrs IST of today the 10<sup>th</sup> July:**

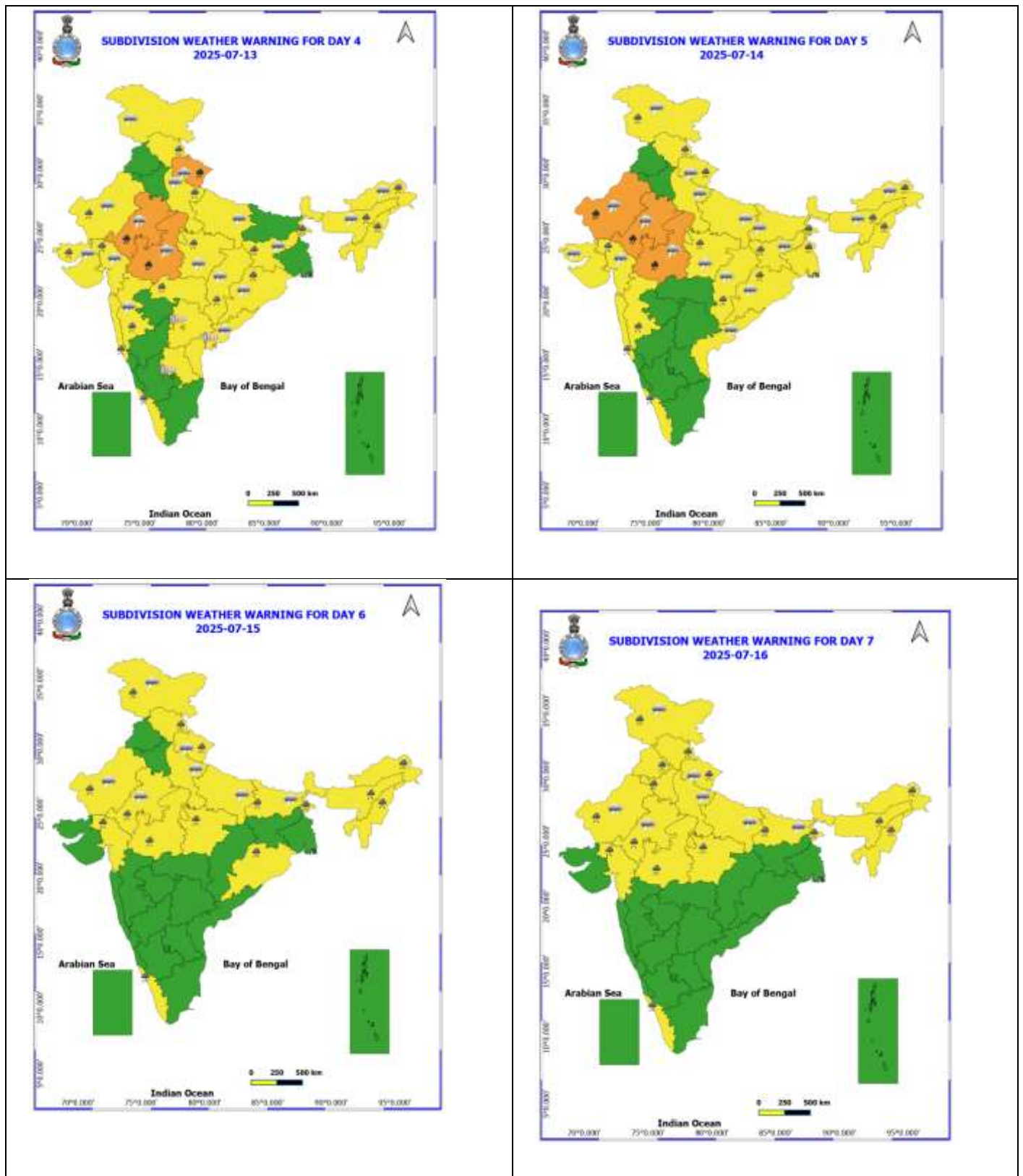
- ❖ **Punjab:** Faridkot 61; Fathegarh 39; Mohali 35; Moga 33;
- ❖ **Madhya Maharashtra:** Karad (Satara) 54, Mahabaleshwar (Satara) 48;
- ❖ **Bihar:** Madhepura 54;
- ❖ **Haryana:** Kaithal 48; Sirsa 43; Jind 41; Panipat & Rohtak 39; Charkhi Dadri 33; Sonipat 31;
- ❖ **West Madhya Pradesh:** Harda, Ujjain, Sehore 44;
- ❖ **East Madhya Pradesh:** Narsinghpur 41;
- ❖ **Vidarbha:** Yavatmal 41;
- ❖ **Marathwada:** Tulga (Dharashiv) 41;
- ❖ **Assam & Meghalaya:** Jorhat 41

Table-1								
7 Days Rainfall Forecast								
S.No.	Subdivision	10- Jul	11- Jul	12- Jul	13- Jul	14- Jul	15- Jul	16- Jul
		Day 1	Day 2	Day 3	Day 4	Day 5	Day 6	Day 7
1	ANDAMAN & NICOBAR ISLANDS	FWS	FWS	FWS	WS	WS	WS	WS
2	ARUNACHAL PRADESH	SCT	SCT	FWS	FWS	FWS	FWS	FWS
3	ASSAM & MEHGHALAYA	SCT	SCT	FWS	FWS	WS	FWS	FWS
4	NAGALAND, MANIPUR, MIZORAM AND TRIPURA	WS	FWS	FWS	FWS	FWS	FWS	FWS
5	SUB HIMALAYAN WEST BENGAL & SIKKIM	FWS	SCT	SCT	WS	WS	WS	WS
6	GANGETIC WEST BENGAL	WS	FWS	FWS	WS	WS	FWS	FWS
7	ODISHA	FWS	SCT	FWS	FWS	FWS	FWS	SCT
8	JHARKHAND	WS	WS	FWS	WS	WS	FWS	SCT
9	BIHAR	SCT	SCT	ISOL	ISOL	SCT	FWS	FWS
10	EAST UTTAR PRADESH	SCT	SCT	FWS	SCT	SCT	FWS	FWS
11	WEST UTTAR PRADESH	FWS	SCT	FWS	SCT	SCT	FWS	FWS
12	UTTARAKHAND	FWS	FWS	FWS	WS	WS	FWS	FWS
13	HARYANA, CHANDIGARH & DELHI	WS	FWS	SCT	SCT	SCT	SCT	FWS
14	PUNJAB	WS	FWS	SCT	SCT	SCT	SCT	FWS
15	HIMACHAL PRADESH	FWS	FWS	SCT	FWS	FWS	FWS	WS
16	JAMMU AND KASHMIR AND LADAKH	FWS	SCT	SCT	SCT	FWS	FWS	FWS
17	WEST RAJASTHAN	SCT	ISOL	SCT	FWS	FWS	FWS	FWS
18	EAST RAJASTHAN	SCT	FWS	FWS	FWS	FWS	FWS	FWS
19	WEST MADHYA PRADESH	SCT	FWS	WS	WS	WS	FWS	FWS
20	EAST MADHYA PRADESH	WS	WS	WS	WS	WS	WS	WS
21	GUJRAT REGION	FWS	FWS	FWS	WS	WS	WS	FWS
22	SAURASHTRA & KUTCH	SCT	SCT	SCT	FWS	FWS	FWS	FWS
23	KONKAN & GOA	WS	WS	FWS	WS	WS	WS	FWS
24	MADHYA MAHARASHTRA	SCT	SCT	SCT	SCT	SCT	SCT	ISOL
25	MARATHWADA	SCT	ISOL	ISOL	ISOL	ISOL	ISOL	ISOL
26	VIDARBHA	WS	WS	FWS	FWS	FWS	FWS	FWS
27	CHHATTISGARH	WS	WS	WS	FWS	FWS	WS	WS
28	COASTAL ANDHRA PRADESH	ISOL	ISOL	ISOL	ISOL	ISOL	ISOL	SCT
29	TELANGANA	SCT	SCT	SCT	SCT	SCT	SCT	SCT
30	RAYALASEEMA	ISOL	ISOL	ISOL	ISOL	ISOL	ISOL	ISOL
31	TAMILNADU & PUDUCHERRY	ISOL	ISOL	ISOL	ISOL	ISOL	SCT	SCT
32	COSTAL KARNATAKA	WS	WS	WS	WS	WS	WS	WS
33	NORTH INTERIOR KARNATAKA	SCT	SCT	SCT	SCT	SCT	FWS	FWS
34	SOUTH INTERIOR KARNATAKA	SCT	SCT	SCT	SCT	SCT	FWS	FWS
35	KERALA AND MAHE	WS	WS	WS	WS	WS	WS	WS
36	LAKSHADWEEP	FWS	FWS	FWS	FWS	FWS	FWS	FWS

- As the lead period increases forecast accuracy decrease.







- Action may be taken based on ORANGE AND REDCOLOUR warnings.
- Vulnerable regions likely urban and hilly areas action may be initiated for heavy rainfall warning.
- As the lead period increases forecast accuracy decreases.

Detailed districtwise Multi Hazard weather warning for next five days available at <https://mausam.imd.gov.in/responsive/districtWiseWarningGIS.php>

## Weather forecast over Delhi/NCR during 10<sup>th</sup> to 13<sup>th</sup> July 2025

### Past Weather:

There has been fall in the minimum temperature up to 2 to 3°C and fall in maximum temperature up to 1 to 2 °C over Delhi/NCR during the past 24 hours. The maximum and minimum temperatures over Delhi were around 34 to 37 °C and 22 to 23 °C respectively. The minimum temperature was below normal up to 3 to 4 °C and the maximum temperature was below normal up to 1 to 3 °C. Generally cloudy sky conditions with predominant surface wind from the southwest direction with wind speeds up to 15 kmph gusting to 35 kmph prevailed during the past 24 hours. Light to moderate rainfall has been recorded in most places with isolated places heavy rainfall of Delhi. Generally cloudy sky conditions with a windspeed of less than 16 kmph from the northeast direction prevailed over the region in the forenoon today.

### Weather Forecast:

**10.07.2025:** Generally cloudy sky. Light to Moderate rain at most of the places with heavy rain at isolated places accompanied by thunderstorms/lightning. The maximum temperatures over Delhi are likely to be in the range of 28 to 30°C. The maximum temperature will be below normal up to 6 to 8 °C. The predominant surface wind will likely be from the northeast direction with a wind speed of less than 15 kmph in the afternoon. The wind speed will gradually decrease becoming 08-12 kmph from the southeast direction during evening and night.

**11.07.2025:** Generally cloudy sky. Very light to light rain accompanied by thunderstorms/lightning. The maximum and minimum temperatures over Delhi are likely to be in the range of 33 to 35°C and 23 to 25°C respectively. The minimum temperature will be below normal up to 2 to 4°C, and the maximum temperature will be below normal up to 1 to 3°C. The predominant surface wind will likely be from the southeast direction with a wind speed of less than 10 kmph during the morning hours. The wind speed will gradually increase becoming less than 15 kmph from the northeast direction in the afternoon. It will decrease to less than 10 kmph from the northeast direction during the evening and night.

**12.07.2025:** Partly cloudy sky. Very light to light rain accompanied by thunderstorms/lightning. The maximum and minimum temperatures over Delhi are likely to be in the range of 34 to 36°C and 24 to 26°C, respectively. The minimum temperature will be below normal up to 1 to 3 °C, and the maximum temperature will be below normal up to 1 to 2°C. The predominant surface wind will likely be from the northwest direction with a wind speed of less than 15 kmph during the morning hours. The wind speed will gradually decrease becoming less than 10 kmph from the northwest direction in the afternoon. It will decrease to less than 08 kmph from the northeast direction during the evening and night.

**13.07.2025:** Partly cloudy sky. Very light to light rain accompanied by thunderstorms/lightning. The maximum and minimum temperatures over Delhi are likely to be in the range of 34 to 36°C and 25 to 27°C, respectively. The minimum temperature will be near normal and the maximum temperature will be below normal up to 1 to 2 °C. The predominant surface wind will likely be from the southeast direction with a wind speed of less than 12 kmph during the morning hours. The wind speed will gradually increase, becoming less than 15 kmph from the southeast direction in the afternoon. It will decrease to less than 10 kmph from the southeast direction during the evening and night.

### Impact expected and Action Suggested due to heavy rainfall with thunderstorm/lightning:

- Be cautious and take precautionary measures, though there is the likelihood of thunderstorms/lightning.
- Damage to standing crops, Minor to major damage to power and communication lines due to breaking of branches, Partial damage to vulnerable structures due to strong winds, Loose objects may fly.
- People are advised to keep a watch on the weather for worsening conditions and be ready to move to safer places accordingly, stay indoors, close windows & doors and avoid travel if possible, take safe shelters; do not take shelter under trees, do not lie on concrete floors and do not lean against concrete walls, unplug electrical/ electronic appliances, immediately get out of water bodies, keep away from all the objects that conduct electricity.

### Impact & Action Suggested

- ✓ **Very heavy rainfall** over Himachal Pradesh, Jammu, Punjab, Haryana, West Uttar Pradesh on 10<sup>th</sup>; Uttarakhand on 13<sup>th</sup>; West Rajasthan on 14<sup>th</sup>; East Rajasthan, West Madhya Pradesh during 11<sup>th</sup>-14<sup>th</sup> July. East Madhya Pradesh during 10<sup>th</sup>-12<sup>th</sup> July.

### Impact Expected

- Localized Flooding of roads, water logging in low lying areas and closure of underpasses mainly in urban areas of the above region.
- Occasional reduction in visibility due to heavy rainfall.
- Disruption of traffic in major cities due to water logging in roads leading to increased travel time.
- Minor damage to kutchha roads.
- Possibilities of damage to vulnerable structure.
- Localized Landslides/Mudslides/landslips/mudslips/landsinks/mudsinks.
- Damage to horticulture and standing crops in some areas due to inundation.
- It may lead to riverine flooding in some river catchments (for riverine flooding please visit Web page of CWC)

### Action Suggested

- Check for traffic congestion on your route before leaving for your destination.
- Follow any traffic advisories that are issued in this regard.
- Avoid going to areas that face the water logging problems often.
- Avoid staying in vulnerable structure.

### Agromet advisories for likely impact of Heavy / Heavy to Very Heavy / Extremely Heavy Rainfall

- In **Gird Zone of Madhya Pradesh**, postpone sowing of soybean and pearl millet and drain out excess water from already sown fields. In **Satpura Plateau zone**, make arrangements for proper drainage in the fields of maize, soybean and vegetables. Protect vegetable nursery with green net or any other medium. In **Kymore Plateau and Satpura Hill Zone**, drain out excess water from vegetables.
- In **Chhattisgarh**, ensure proper drainage in rice nurseries and fields of rice, maize, pigeon pea, minor millets and vegetables. In **Plain Zone**, postpone line sowing / transplanting of rice and sowing of pigeon pea, maize and soybean.
- In **Sub Tropical Zone of Jammu & Kashmir**, drain out excess rain water from fields of maize and transplanted rice to avoid water stagnation. In **Intermediate Zone**, provide drainage in maize fields. Provide mechanical support to cucurbits and tomato plants to prevent lodging. Postpone sowing of *kharif* pulses till cessation of heavy rains.
- In **Mid Hills Sub Humid Zone of Himachal Pradesh**, provide support to the cucumber vines and maintain proper drainage in vegetable and maize fields. In **Sub Montane and Low Hills Sub Tropical Zone**, ensure proper drainage in maize fields to avoid water logging.
- In **Uttarakhand**, ensure proper drainage facilities in soybean, maize, barnyard millet, finger millet, pigeon pea, kidney beans, vegetables and orchards. Harvest matured vegetables and fruits and store in safe place.
- In **Undulating Plain Zone of Punjab**, maintain proper drainage in the fields of rice, sugarcane, *kharif* maize and green gram.
- In **Eastern Zone of Haryana**, maintain proper drainage in rice fields.
- In **South Western Semi-Arid Zone of West Uttar Pradesh**, make proper arrangement to drain out excess water from the fields of paddy, spring sugarcane, pigeon pea, maize and vegetables.
- In **Southeastern Humid Plain Zone of East Rajasthan**, make provision to drain out excess water from rice nurseries and fields of maize, soybean and black gram. In **Flood Prone Eastern Plain Zone**, postpone sowing / re- sowing of sesame, green gram and pearl millet during heavy rains.
- In **Konkan**, make arrangement to drain out excess water from rice and finger millet nurseries, groundnut, vegetables and orchards. In **Vidarbha**, make arrangements to drain out excess water *kharif* crops, vegetable nurseries and orchards.
- In **Jharkhand**, make necessary arrangements to drain out excess water from maize fields, rice and vegetable nurseries. Cover the vegetable nurseries with polythene sheets.
- In **Tripura**, maintain good drainage in the fields of *Aus* rice and maize.

### Livestock / Fishery

- Keep the animals inside the shed during heavy rainfall and provide them balanced feed.
- Store feed and fodder in a safe place to prevent spoilage.
- Construct an outlet with proper netting around the ponds to drain out excess water, thereby preventing fish from escaping in case of overflow.



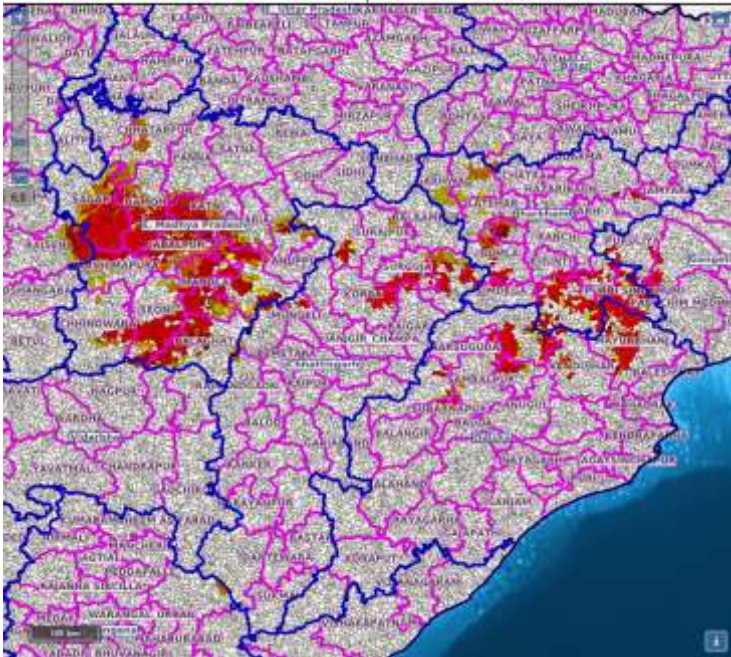
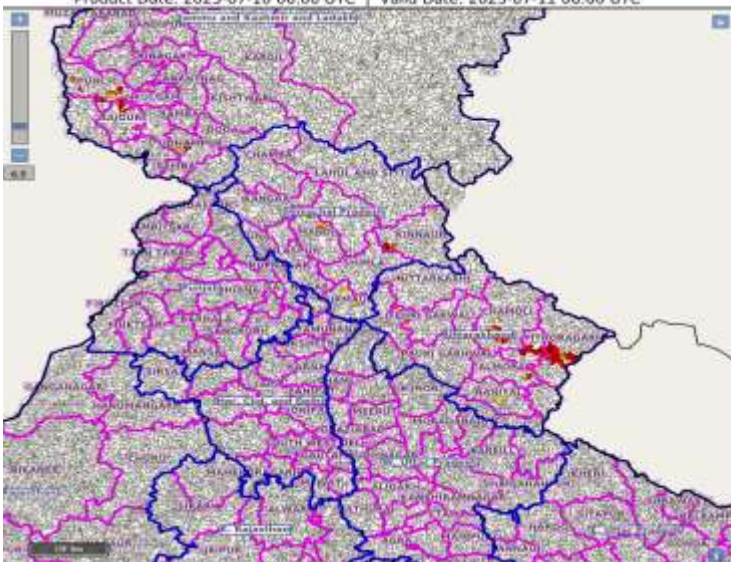
## Livestock / Fishery

- Keep the animals inside the shed during heavy rainfall and provide them balanced feed.
- Store feed and fodder in a safe place to prevent spoilage.
- Construct an outlet with proper netting around the ponds to drain out excess water, thereby preventing fish from escaping in case of overflow.

## Agromet advisories for likely impact of Thunderstorm / Gusty Winds / Squally Winds

- Provide mechanical support to horticultural crops and staking or support to vegetables and young fruit plants / fruit-bearing plants to avoid lodging due to strong winds.

## Flash flood guidance:

<p>24 hours Outlook for the Flash Flood Risk (FFR) till 1130 IST of 11-07-2025 :</p> <p>Moderate flash flood risk likely over few watersheds &amp; neighbourhoods of following Met Sub-divisions during next 24 hours.</p> <p>Chhattisgarh - Balarampur, Bilaspur, Durg, Jashpur, Korba, Korea, Rajnandgaon, Surajpur and Surguja districts. East Madhya Pradesh - Anuppur, Balaghat, Chhatarpur, Damoh, Dindori, Jabalpur, Katni, Narshimpura, Panna, Sagar, Seoni, Shahdol and Umaria districts. Odisha - Baragarh, Deogarh, Kendujhar, Mayurbhanj, Subarnapur and Sundargarh districts. Jharkhand - Dhanbad, East Singhbhum, Garhwa, Giridih, Gumla, Khunti, Latehar, Lohardaga, Palamu, Ranchi, Saraikela, Simdega, East Singhbhum and West Singhbhum districts.</p> <p>Surface runoff/ Inundation may occur at some fully saturated soils &amp; low-lying areas over Area of Concern (AoC) as shown in map due to expected rainfall occurrence in next 24 hours.</p>	<p>Product: GFS FFR   Timescale: 24-hr   Region: "INDIA"</p> <p>Product Date: 2025-07-10 06:00 UTC   Valid Date: 2025-07-11 06:00 UTC</p> 
<p>24 hours Outlook for the Flash Flood Risk (FFR) till 1130 IST of 11-07-2025 :</p> <p>Low to Moderate flash flood risk likely over few watersheds &amp; neighbourhoods of following Met Sub-divisions during next 24 hours.</p> <p>Himachal Pradesh - Kinnaur, Kullu, Mandi, Shimla and Sirmour districts. Jammu &amp; Kashmir &amp; Ladakh - Punch, Rajouri and Udhampur districts. Uttarakhand - Almora, Bageshwar, Chamoli, Nanital, Pithoragarh, Tehri Garwal and Uttarkashi districts.</p> <p>Surface runoff/ Inundation may occur at some fully saturated soils &amp; low-lying areas over Area of Concern (AoC) as shown in map due to expected rainfall occurrence in next 24 hours.</p>	<p>Product: WRF FFR   Timescale: 24-hr   Region: "INDIA"</p> <p>Product Date: 2025-07-10 06:00 UTC   Valid Date: 2025-07-11 06:00 UTC</p> 

## Legends & abbreviations:

- ❖ **Heavy Rain:**64.5-115.5mm; **Very Heavy Rain:**115.6-204.4mm; **Extremely Heavy Rain:** >204.4mm.
- ❖ **Obsy:** Observatory; Automatic Weather Station; **ARG:** Automatic Rain Gauge; **dist:** District; **NH:** National Highway; **KVK:** Krishi Vigyan Kendra; **DVC:** Damodar Valley Corporation; **PTO:** Part Time Office, **Aero:** Aerodrome, **IAF:** Indian Air Force.
- ❖ **Region wise classification of meteorological Sub-Divisions:**
  - **Northwest India:** Western Himalayan Region (Jammu-Kashmir-Ladakh-Gilgit-Baltistan-Muzaffarabad, Himachal Pradesh and Uttarakhand); Punjab, Haryana-Chandigarh-Delhi; West Uttar Pradesh, East Uttar Pradesh, West Rajasthan and East Rajasthan.
  - **Central India:** West Madhya Pradesh, East Madhya Pradesh, Vidarbha and Chhattisgarh.
  - **East India:** Bihar, Jharkhand, Sub-Himalayan West Bengal & Sikkim; Gangetic West Bengal, Odisha and Andaman & Nicobar Islands.
  - **Northeast India:** Arunachal Pradesh, Assam & Meghalaya and Nagaland, Manipur, Mizoram & Tripura.
  - **West India:** Gujarat Region, Saurashtra & Kutch, Konkan & Goa, Madhya Maharashtra and Marathawada.
  - **South India:** Coastal Andhra Pradesh & Yanam, Telangana, Rayalaseema, Coastal Karnataka, North Interior Karnataka, South Interior Karnataka, Kerala & Mahe, Tamil Nadu, Puducherry & Karaikal and Lakshadweep.



## LEGENDS

1. अंडमान और निकोबार द्वीपसमूह

2. अरुणाचल प्रदेश

3. असम और मेघालय

4. नागालैंड, मणिपुर, मिजोरम और त्रिपुरा

5. उप-हिमालयी पश्चिम बंगाल और सिक्किम

6. गंगीय पश्चिम बंगाल

7. ओडिशा

8. झारखंड

9. बिहार

10. पूर्वी उत्तर प्रदेश

11. पश्चिम उत्तर प्रदेश

12. उत्तराखंड

13. हरियाणा, चंडीगढ़ और दिल्ली

14. पंजाब

15. हिमाचल प्रदेश

16. जम्मू और कश्मीर और लद्दाख

17. पश्चिम राजस्थान

18. पूर्वी राजस्थान

19. पश्चिम मध्य प्रदेश

20. पूर्वी मध्य प्रदेश

21. गुजरात

22. सौराष्ट्र

23. कोंकण और गोवा

24. मध्य महाराष्ट्र

25. मराठवाड़ा

26. विदर्भ

27. छत्तीसगढ़

28. तटीय आंध्र प्रदेश और यनम

29. तेलंगाना

30. रायलसीमा

31. तमिलनाडु, पुडुचेरी और कराईकल

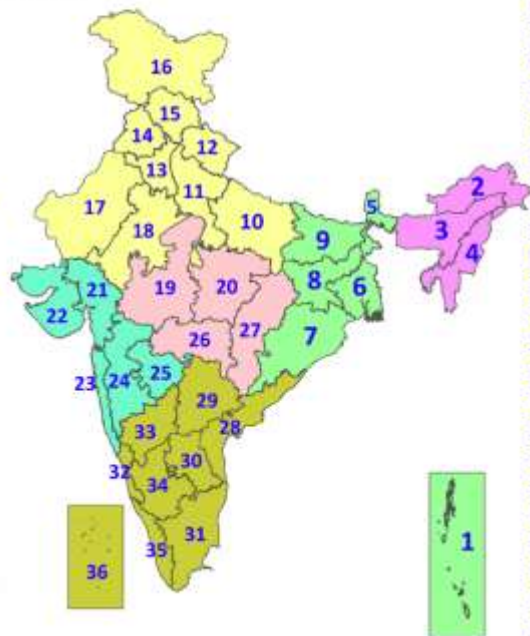
32. तटीय कर्नाटक

33. आंतरिक उत्तरी कर्नाटक

34. आंतरिक दक्षिणी कर्नाटक

35. केरल और माहे

36. लक्षद्वीप



1. Andaman & Nicobar Islands

2. Arunachal Pradesh

3. Assam & Meghalaya

4. Nagaland, Manipur, Mizoram & Tripura

5. Sub-Himalayan West Bengal & Sikkim

6. Gangetic West Bengal

7. Odisha

8. Jharkhand

9. Bihar

10. East Uttar Pradesh

11. West Uttar Pradesh

12. Uttarakhand

13. Haryana, Chandigarh & Delhi

14. Punjab

15. Himachal Pradesh

16. Jammu & Kashmir and Ladakh

17. West Rajasthan

18. East Rajasthan

19. West Madhya Pradesh

20. East Madhya Pradesh

21. Gujarat

22. Saurashtra

23. Konkan & Goa

24. Madhya Maharashtra

25. Marathwada

26. Vidarbha

27. Chhattisgarh

28. Coastal Andhra Pradesh & Yanam

29. Telangana

30. Rayalaseema

31. Tamilnadu, Puducherry & Karaikal

32. Coastal Karnataka

33. North Interior Karnataka

34. South Interior Karnataka

35. Kerala & Mahe

36. Lakshadweep

## SPATIAL DISTRIBUTION (% of Stations reporting)

% Stations	Category	% Stations	Category
76-100	Widespread (WS/Most Places)	26-50	Scattered (SCT/A Few Places)
51-75	Fairly Widespread (FWS/Many Places)	1-25	Isolated (ISOL)



Fog



Heavy Snow



Cold Wave



Heavy Rain



Dust Storm



Cold Day



Very Heavy Rain



Heat Wave



Ground Frost



Extremely Heavy Rain



Warm Night



Thunder & Lightning



Hot Day



Hailstorm



Hot & Humid



Dust Raising Winds



Strong Surface Winds

### COLOUR CODED WARNING

No Warning (No Action)

Watch (Be Aware)

Alert (Be Prepared To Take Action)

Warning (Take Action)

### Probabilistic Forecast

Terms	Probability of Occurrence (%)
Unlikely	< 25
Likely	25 - 50
Very Likely	50 - 75
Most Likely	> 75

\* Red colour warning does not mean "Red Alert", Red colour warning means "Take Action".

Forecast and Warning for any day is valid from 0830 hours IST of day till 0830 hours IST of next day.

For more details, kindly visit <https://mausam.imd.gov.in> or contact: 011-2434-4599

(Service to the Nation since 1875)

### DEFINITION/CRITERIA

#### Rain/ Snow \*

Heavy: 64.5 to 115.5 mm/cm \*  
Very Heavy: 115.6 to 204.4 mm/cm \*  
Extremely Heavy: > 204.4 mm/cm \*

#### Heat Wave

When maximum temperature of a station reaches  $\geq 40^{\circ}\text{C}$  for plains and  $\geq 30^{\circ}\text{C}$  for hilly regions  
(a) Based on Departure from normal

Heat Wave: Maximum Temperature Departure from normal  $4.5^{\circ}\text{C}$  to  $6.4^{\circ}\text{C}$ .

Severe Heat Wave: Maximum Temperature Departure from normal  $\geq 6.5^{\circ}\text{C}$

(b). Based on Actual maximum temperature

Heat Wave: When actual maximum temperature  $\geq 45^{\circ}\text{C}$ .

Severe Heat Wave: When actual maximum temperature  $\geq 47^{\circ}\text{C}$ .

(c). Criteria for heat wave for coastal stations

When maximum temperature departure is  $> 4.5^{\circ}\text{C}$  from normal. Heat Wave may be described provided maximum temperature  $\geq 37^{\circ}\text{C}$ .

#### Warm Night

When maximum temperature remains  $40^{\circ}\text{C}$

Warm Night: When minimum temperature departure  $4.5^{\circ}\text{C}$  to  $6.4^{\circ}\text{C}$ .

Severe Warm Night: When minimum temperature departure  $> 6.4^{\circ}\text{C}$ .

#### Cold Wave

When minimum temperature of a station  $\leq 10^{\circ}\text{C}$  for plains and  $\leq 0^{\circ}\text{C}$  for hilly regions.

(a). Based on departure

Cold Wave: Minimum Temperature Departure from normal  $-4.5^{\circ}\text{C}$  to  $-6.4^{\circ}\text{C}$ .

Severe Cold Wave: Minimum Temperature Departure from normal  $\leq -6.5^{\circ}\text{C}$

(b) Based on actual Minimum Temperature (for Plains only)

Cold Wave: When Minimum Temperature is  $\leq 4.0^{\circ}\text{C}$

Severe Cold Wave: When Minimum Temperature is  $\leq 2.0^{\circ}\text{C}$

(c) For Coastal Stations

When Minimum Temperature departure is  $\leq -4.5^{\circ}\text{C}$  & actual Minimum Temperature is  $\leq 15^{\circ}\text{C}$

#### Cold Day

When minimum temperature of a station  $\leq 10^{\circ}\text{C}$  for plains and  $\leq 0^{\circ}\text{C}$  for hilly regions  
Based on departure

Cold Day: Maximum Temperature Departure from normal  $-4.5^{\circ}\text{C}$  to  $-6.4^{\circ}\text{C}$ .

Severe Cold Day: Maximum Temperature Departure from normal  $\leq -6.5^{\circ}\text{C}$

#### Fog

Phenomenon of small droplets suspended in air and the horizontal visibility  $< 1\text{km}$

Moderate Fog: When the visibility between 500-200 metres

Dense Fog: when the visibility between 50- 200 metres

Very Dense Fog: when the visibility  $< 50$  metres

#### Thunderstorm

Sudden electrical discharges manifested by a flash of light (Lightning) and a sharp rumbling sound (thunder)

#### Dust/Sand Storm

An ensemble of particles of dust or sand energetically lifted to great heights by a strong and turbulent wind.

#### Frost

Ice deposits on ground

Air temperature  $\leq 4^{\circ}\text{C}$  ( over Plains)

#### Squall

A strong wind that rises suddenly, lasts for atleast 1 minute.

Moderate: Wind speed 52-61 kmph

Severe: Wind speed 62-67 kmph

Very Severe: Wind speed  $> 67$  kmph

#### Sea State

Effect of various waves in the sea over specific area

Rough to very rough: Wind speed 41-62 kmph (22-33 knots) & Wave height 2.5-6 metre

High to very high: Wind speed 63-117 kmph ( 34-63 knots) & Wave height 6-14 metre

Phenomenal: Wind speed  $> 117$  kmph ( $> 63$  knots) & Wave height  $> 14$  metre

#### Cyclone

Cyclonic Storm: Wind speed 62-87 kmph (34-47 knots)

Severe Cyclonic Storm: Wind speed 88-117 kmph (48-63 knots)

Very Severe Cyclonic Storm: Wind speed 118-165 kmph (64 - 89 knots)

Extremely Severe Cyclonic Storm: Wind speed 166-220 kmph (90 -119 knots)

Super Cyclone Storm: Wind speed  $> 220$  kmph ( $> 119$  knots)

\* Red colour warning does not mean "Red Alert", Red colour warning means "Take Action".

Forecast and Warning for any day is valid from 0830 hours IST of day till 0830 hours IST of next day.

For more details, kindly visit <https://mausam.imd.gov.in> or contact: 011-2434-4599

(Service to the Nation since 1875)

**Hot and Humid:** When maximum temperatures remain  $3^{\circ}\text{C}$  above normal along with the above normal relative humidity.